



Company profile



KEL
www.kel.jp

6-17-7 Nagayama, Tama-shi, Tokyo 206-0025, Japan
Tel: +81-42-374-5800

Connect, expand, fulfil.

Connecting makes
ideas come true.



KEL is a specialist connector manufacturer founded in 1962.

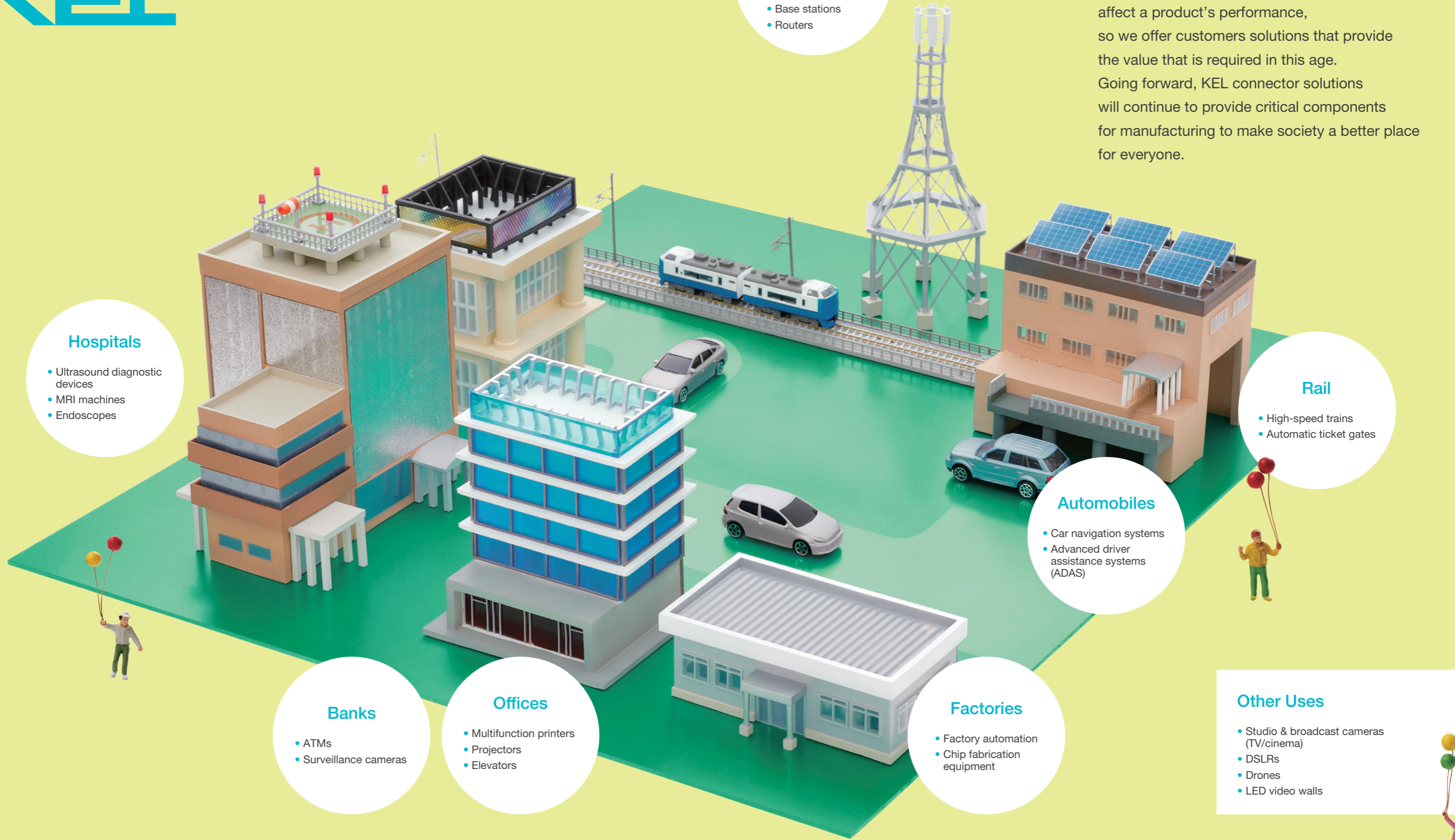
As a key part of electronic devices,
KEL connectors play an integral role in vast markets
ranging from industrial equipment to medical devices,
communications infrastructure, and automobiles,
and their scope continues to expand.

Our mission is to bring people's
ideals and ideas to life through connectors
and fulfil their dreams of a better future.

Company Profile

| | |
|------------------|---|
| Trade Name | KEL Corporation |
| Founded | July 23, 1962 |
| Capital | 1,617 million yen |
| Business Purpose | The manufacture, sale, and import/export of electric machinery/appliances, precision machinery/appliances, synthetic resin products, chemical products, metal industrial products, and miscellaneous goods, and other incidental business |

Connecting Society



5G/ Communications

- Communications infrastructure
- Base stations
- Routers

KEL products have been progressively refined to meet customers' diverse needs. Our products play vital roles in society as integral parts of factory equipment, medical devices, cars, and communications infrastructure.

We understand that connector technology can greatly affect a product's performance, so we offer customers solutions that provide the value that is required in this age. Going forward, KEL connector solutions will continue to provide critical components for manufacturing to make society a better place for everyone.

Hospitals

- Ultrasound diagnostic devices
- MRI machines
- Endoscopes

Rail

- High-speed trains
- Automatic ticket gates

Automobiles

- Car navigation systems
- Advanced driver assistance systems (ADAS)

Banks

- ATMs
- Surveillance cameras

Offices

- Multifunction printers
- Projectors
- Elevators

Factories

- Factory automation
- Chip fabrication equipment

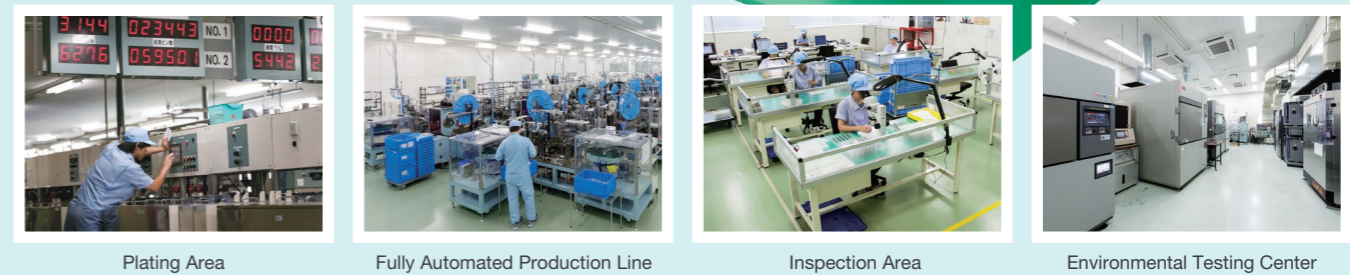
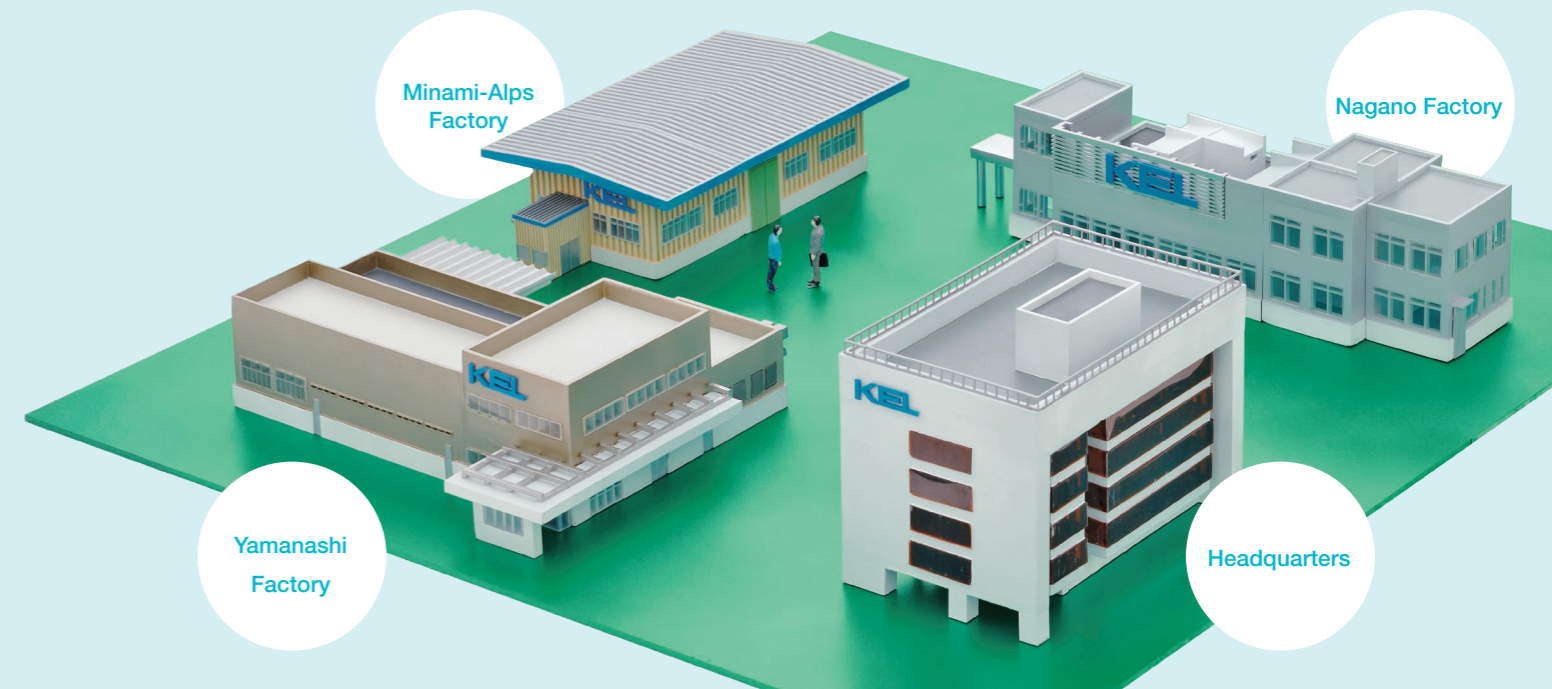
Other Uses

- Studio & broadcast cameras (TV/cinema)
- DSLRs
- Drones
- LED video walls

STRENGTHS

Making Products Better by Making Things Possible

At KEL, we do our best to make connector development and manufacturing exciting, enjoyable, and interesting. Every step of production, from the initial consultation through to planning, design, parts manufacturing, assembly, and quality checks, is completed in-house with robust collaboration between each department. KEL engineers proactively attend meetings with customers, and the Quality Assurance Department checks products during the design stage. In this environment, we engage with our customers and work to produce products that solve their problems.



Connector Production Process

and the Quality Assurance Department verifies products at the design stage.

Sales × Eng From Consultation to Manufacturing

KEL designs and produces samples based on your requirements, and incorporates your feedback in the adjustment and verification process to prepare for mass production.

Consultation

Our sales representatives will note your required specifications, budget, and schedule. Feel free to specify your requirements down to the tiniest detail: e.g., "As small as possible," or "Easy to install (in your product)." This will enable us to offer a more optimal proposal.



Design/ Verification

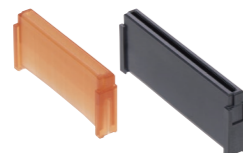
At our Environmental Testing Center at KEL Headquarters, to verify product performance, we conduct electromagnetic field analysis with Ansys HFSS and Dassault CST, run thermal shock tests to examine deformation under changing temperatures, and perform gas corrosion testing to verify plating durability. Before beginning mass production, the specifications are checked by the Quality Assurance Department.



Sample Production

We can produce samples based on proposals. After consultation, we 3D-print the design you envisage. If you commission the product, we continue with development, making molds in the prototyping and mass production stages to verify the completed samples as we proceed.

On the right is the finished product, and on the left is a 3D-printed sample. ▼



Product Development

Product development is handled by two teams. One team is assigned to develop the product, and the other provides support by performing evaluations and managing testing facilities. We have created a system to consistently produce high-quality products, which includes in-house training to improve our engineers' development skills.



MFG × QA Mass Production & Quality Control

Pressing & Plating (Contacts)

In the pressing stage, thin coiled copper alloy sheet is cut, bent, and forged with dies to form contact terminals. The terminals are then coated with highly precise gold plating in the necessary areas with proprietary KEL plating equipment and jigs.

Molding (Insulators)

Our molding machines range in tonnage from 18 to 80 tonnes, allowing the production of everything from narrow-pitch to large insulators. To save energy, both fully motorized and hybrid machinery are used.

Assembly

All stages from component supply through assembly, inspection, and packing are completed with cutting-edge equipment.

Inspection

The assembly facilities include image inspection devices, which enable product quality to be maintained without a separate inspection step.

Shipping

The manufactured products are stored at KEL warehouses in Japan or abroad, and shipped in accordance with your deadlines. Products are systematically managed in logistics warehouses to ensure that they are delivered safely and accurately.

Delivery



After delivery, consultations are held to improve product quality even further.

ADVANTAGE

01

Materialize your vision

EFFECTIVE PROPOSALS

KEL's Sales Department offers proposals that meet customer's needs by collaborating with other departments to provide tailored solutions.

Flexible, Inter-departmental Consultation

Consultations are quick and efficient thanks to close cooperation between the Sales, Engineering, Manufacturing, and Quality Control departments. We are ready to meet your every need, from producing samples and small lots, to customized products and bespoke niche items. Our manufacturing infrastructure enables us to immediately respond to the smallest of demands.



Joint Development with Knowledgeable Sales Representatives

The Sales Department attends medical society lectures and seminars held by the Engineering Department to stay well-versed in specialized connector technology and our customers' own products. This daily pursuit of knowledge enables them to provide customers with sound consultation and grasp exactly what the market is asking for. KEL always aims to provide proposals from the customer's own perspective, and works to develop new products collaboratively.



Comprehensive Proposals that Leverage Strengths

Besides our connector business, we produce harnesses using a variety of cables, and have over 40 years' experience manufacturing racks. These enable us to combine and leverage each department's strengths to offer comprehensive proposals, tailored to customers' products and needs, and provide new products with high added value.



ADVANTAGE

02

Connector tech for the future

MANUFACTURING EXPERTISE

The experienced Engineering Department participates from the planning stage to deliver product proposals and R&D that go beyond customers' needs.

Early Engineering Department Participation

From planning to design and verification, sample production, and preparation for mass production, our Engineering Department participates in every step until completion to ensure that product specifications exceed customers' requirements. Moreover, KEL engineers proactively visit customers' businesses to ensure that proposals grasp what is required and go a step further.



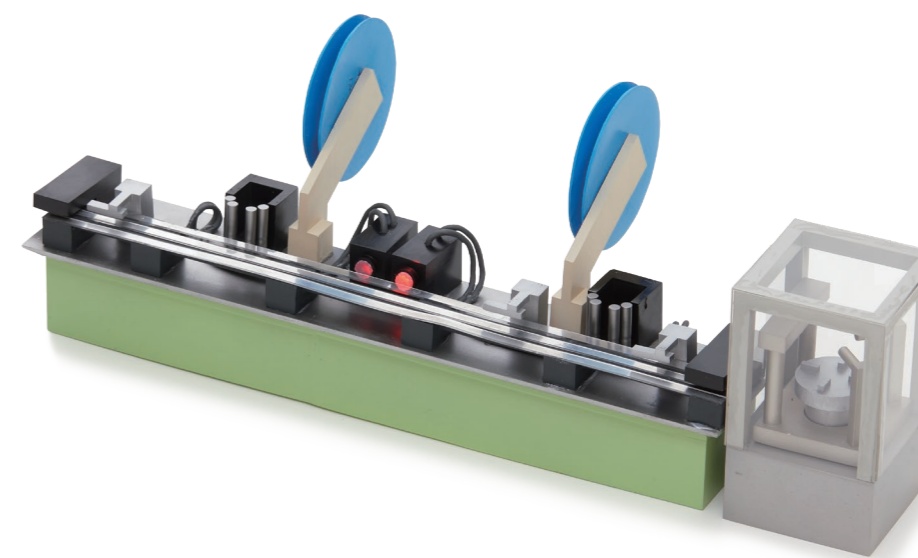
Pursuit of Sophistication and Miniaturization

We actively invest management resources in cutting-edge R&D in pursuit of greater sophistication and miniaturization. This has enabled us to swiftly respond to the market's ever-changing needs and produce the state-of-the-art connectors required by the electronics industry. KEL engineers can begin development based on customer's needs in a timely manner as the R&D facilities are located at the company headquarters.



Strong Demand Abroad

KEL technology is attracting global attention. Our connectors, which are essential in state-of-the-art automotive development and user-friendly designs that reflect customers' needs, are highly regarded overseas. Going forward, we will continue to create products in demand worldwide by applying our unique technical R&D expertise.



ADVANTAGE

03 STABLE PRODUCTION

The result of reliable technology

The Manufacturing Department plays a central role at KEL production sites, earnestly confronting the ever-diversifying range of connectors with technology backed by experience.

A Production Systems that Meets Customers' Needs

Thanks to our flexible-capacity integrated production infrastructure, we can supply products in step with customers' preferred development and production schedules while constantly putting quality first. This stable infrastructure is made possible by strict adherence to production manuals and the application of technology backed by experience.



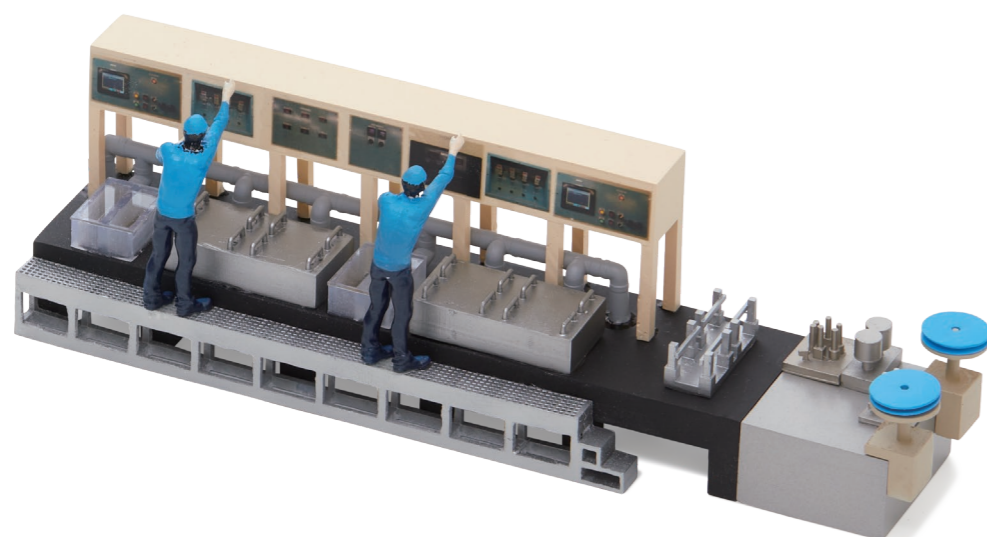
Responding to Diversifying Demand

To flexibly accommodate customers' required specifications and functions, we have established an automated multipurpose production line that can meet demand for high-mix low-volume production, including special orders. We also emphasize improving employees skills to handle assembling a wide variety of products, and have accumulated a wealth of proprietary technical expertise that enables us to achieve exceptional production quality with products that are difficult to assemble.



Domestic Production Sites

We have two factories in Yamanashi Prefecture (one handles manufacturing and assembly, and the other, parts processing), and another in Nagano Prefecture, which enable us to flexibly meet customer demand without delay. High product quality is also achieved through close collaboration with other departments in every step from production process setup to product delivery. The Manufacturing Department plays a central role at KEL production sites and is ready to meet any possible need.



ADVANTAGE

04 RELIABLE QUALITY

A trusted partner

KEL is proud to offer dependable, high-quality products thanks to the unshakable reliability conferred by its quality control systems.

Uncompromising Quality Control

Connection reliability, our greatest focus, is achieved with rigorous quality control. We have established a management infrastructure based on a deep understanding of products developed through decades of experience, and operate a total quality control system covering everything down to post-delivery quality records. This diligent, serious posture underlying all aspects of production is reflected in KEL products' "plain, robust excellence."



Quality Assurance Based on Global Standards

KEL is certified under ISO 9001 (quality management systems), ISO 14001 (environmental management systems), and IATF 16949 (automotive quality management systems). Quality control is implemented based on these standards in every step from development to delivery. From bespoke orders to mass production, KEL is able to always provide the very highest level of quality.



Transparent Feedback

All departments share quantified customer sales records to identify issues and hammer out solutions. Punctuality and cost advantage are assessed along with quality and other factors to ensure that departments have a comprehensive understanding of what is required, even if they are not in direct communication with the customer. This helps to improve overall awareness and deliver high quality even more reliably.



KEL is committed to achieving a sustainable society as a global connector manufacturer with customers around the world.

SUSTAINABLE VISION

KEL Corporation will

“contribute to an abundant, sustainable society with connector technology.”

KEL’s management vision is to “Be a company that can contribute to the world as a maker of connectors.”

We strive to grow sustainably and achieve a sustainable society, giving consideration to the environment, society, and governance while helping people to live abundant, convenient, and comfortable lives.



ENVIRONMENT Environmental Initiatives

Materiality Topic

Climate action, including resource recycling and nature conservation

Efforts

Climate action



Recycling/
nature
conservation



SOCIETY Social/Workforce Initiatives

Materiality Topic 01 **Building an organization that ensures the well-being of its diverse workforce**

Efforts

Well-being/diverse workforce



Materiality Topic 02 **Business efforts to solve social problems**

Efforts

Safe and comfortable local communities



Making products to support lives globally



GOVERNANCE Corporate Governance Initiatives

Materiality Topic **Strengthening governance to increase quality, safety, and customer satisfaction**

Efforts

Governance



Communication with stakeholders



History & Network

History

- 1962** KEL Corporation founded in Shibuya City, Tokyo
Began manufacturing **printed circuit boards and circuit board connectors**
- 1964** Manufactured **Japan's first** molds for **cross-shaped connector contacts** in preparation for domestic production
- 1967** Relocated and integrated factory and headquarters in Shinagawa City, Tokyo
Developed **KEL RACK**
- 1972** Opened Osaka Branch Office
- 1975** Opened Nagoya Branch Office
- 1976** Commercialized **IC connectors**
- 1980** Opened Utsunomiya Branch Office
- 1981** Commercialized **optical fiber connectors**
- 1982** Commenced operations at Yamanashi Factory (now Minami-Alps Factory)
- 1984** Commercialized **half-pitch connectors**
- 1987** Relocated headquarters to Tama City, Tokyo
- 1988** Opened Mito Branch Office
- 1989** Opened U.S. Representative Office (KEL Connectors, Incorporated)
- 1990** Listed as an OTC stock (now on the TSE Standard Market Index)
Parts processing line completed at Yamanashi Factory (now Minami-Alps Factory)
- 1992** Began operations at Nagano Factory
- 1994** Commercialized **battery connectors**
- 1996** Obtained ISO 9001 certification
- 1998** Commercialized **micro coaxial cable connectors**
- 1999** Commercialized **smart card connectors**
- 2002** Obtained ISO 14001 certification
Built and began operating Environmental Testing Center
- 2004** Established KEL Taiwan Co., Ltd. in Taiwan
- 2005** Commercialized **floating connectors**
- 2008** Established KEL (Shanghai) Corporation in China
- 2009** Commercialized **crimp connectors**
- 2010** Received JSA award for long registration of a management system
- 2012** Celebrated 50th founding anniversary
- 2013** Began operations at Yamanashi Factory
- 2015** Obtained ISO/TS 16949 certification (the automotive quality management system standard, now IATF 16949)
- 2017** Established KEL Europe GmbH in Germany
Established KEL Electronics (Hong Kong) Limited in Hong Kong
Expanded clean area at Yamanashi Factory
- 2018** Commercialized **waterproof crimp connectors**
- 2022** Installed new clean booth at Nagano Factory
- 2024** Established KEL USA, Inc. in USA
- 2025** Established KEL Connector (Zhuhai) Co., Ltd. in China
Established KEL Electronics Singapore Pte. Ltd. in Singapore
- 2026** Opened Tama Center Office

Network

Headquarters/Branch Offices

- Headquarters**
6-17-7 Nagayama, Tama-shi, Tokyo 206-0025, Japan
Tel: +81-42-374-5800 Fax: +81-42-374-5889
- Tama Center Office**
6F, GA Tama bldg., 1-32-3 Ochiai, Tama-shi, Tokyo 206-0033, Japan
Tel: +81-42-374-5801 Fax: +81-42-374-5887
- Mito Branch Office**
3600-35 Higashiishikawa, Hitachinaka-shi, Ibaraki Prefecture 312-0052, Japan
Tel: +81-29-274-9001 Fax: +81-29-274-9005
- Nagoya Branch Office**
7F, Marunouchi Sanchome Building, 3-14-32 Marunouchi, Naka-ku, Nagoya-shi, Aichi Prefecture 460-0002, Japan
Tel: +81-52-209-8655 Fax: +81-52-203-8610
- Osaka Branch Office**
9F, Shin-Osaka Meiko Building, 4-3-12 Miyahara, Yodogawa-ku, Osaka-shi, Osaka 532-0003, Japan
Tel: +81-6-6150-8111 Fax: +81-6-6150-8801

Overseas Subsidiaries

- KEL Taiwan Co., Ltd.**
2F, Building A006 No.1 Weiwang St. Shulin Dist., New Taipei City 238032, Taiwan
Tel: +886-2-8686-9200 Fax: +866-2-8686-6925
- KEL (Shanghai) Corporation**
Room 1203, Zhaofeng Plaza, 1027 Changning Rd., Changning Dist., Shanghai 200050, P.R. China
Tel: +86-21-64400051 Fax: +86-21-64400053
- KEL Electronics (Hong Kong) Limited**
Room1805, 18/F, 1Hung To Road, Kowloon, Hong Kong
Tel: +852-35905813 Fax: +852-35909059
- KEL Connector (Zhuhai) Co., Ltd.**
4-5/F, 188 Chuangye Road, Xiangzhou District, Zhuhai City, Guangdong Province, China
Tel: +86-756-8889383
- KEL Electronics Singapore Pte. Ltd.**
20 Anson Road, #11-01 Twenty Anson, Singapore 079912
Tel: +65-6303-5205
- KEL Europe GmbH**
Am Seestern 4, 40547 Düsseldorf, Germany
Tel: +49-211-542368-0
- KEL USA, Inc.**
604 Third Street, Suite 200, Davis, California 95616 USA
Tel: +1-530-704-2759

Production Sites

- Yamanashi Factory** IATF Certified
1-1 Otsuka, Ichikawamisato-cho, Nishiyatsushiro-shi, Yamanashi Prefecture 409-3611, Japan
Tel: +81-55-225-5611
- Nagano Factory**
1400-5 Nakau, Ikeda-cho, Kitaazumi-gun, Nagano Prefecture 399-8603, Japan
Tel: +81-261-62-6511
- Minami-Alps Factory** IATF Certified
454-1 Miyazawa, Minami-Alps-shi, Yamanashi Prefecture 400-0415, Japan
Tel: +81-55-283-5121

